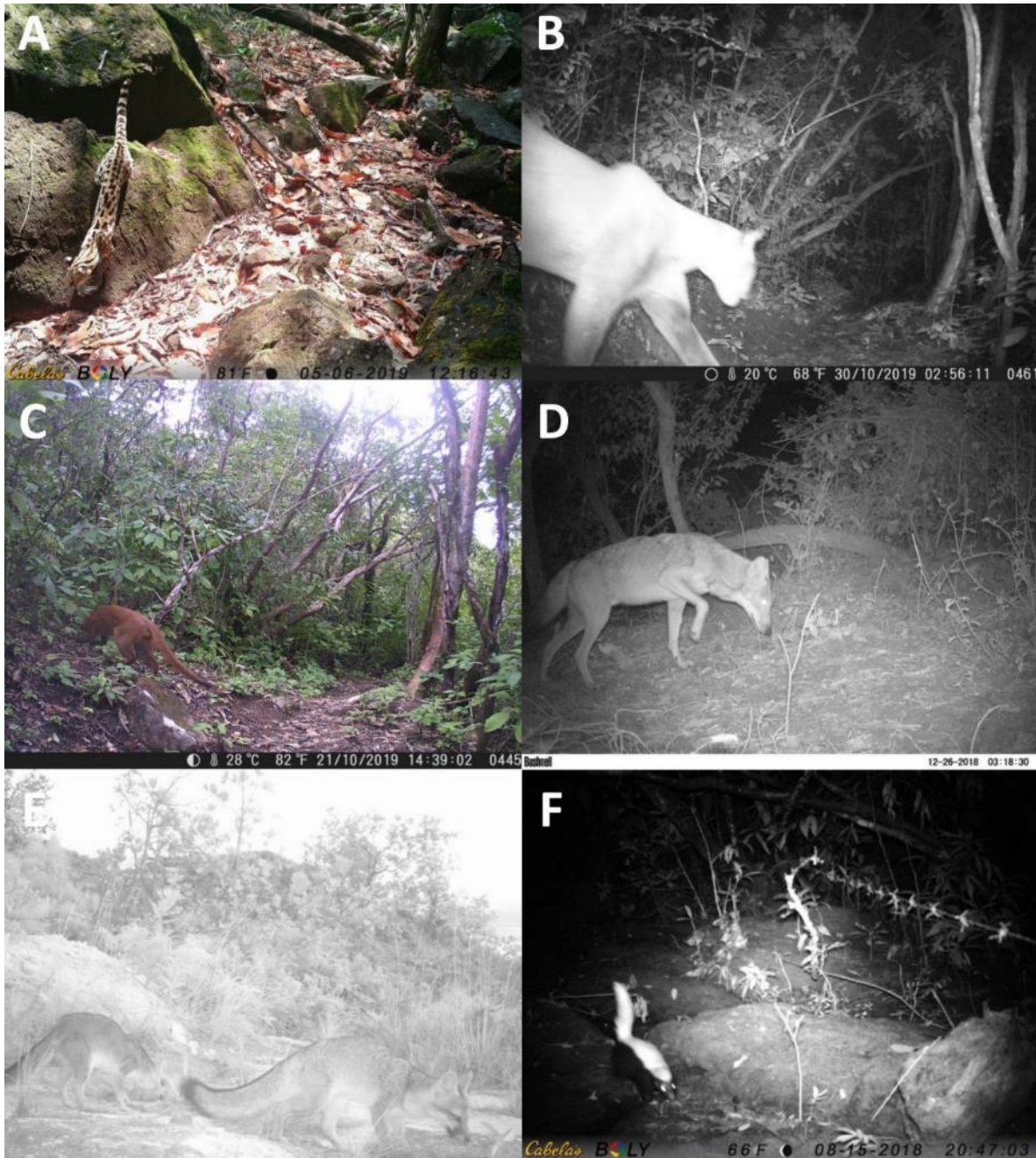




**Fig. 2.** Species identified in camera traps: A) *Didelphis marsupialis*, B) *Philander opossum*, C) *Dasypus novemcinctus*, D) *Tamandua mexicana*, E) *Desmodus rotundus* flying over a cow inside the forest, and F) *Sylvilagus floridanus*.



**Fig. 3.** Species identified in camera traps: A) *Leopardus wiedii*, B) *Puma concolor*, C) *Puma yagouaroundi*, D) *Canis latrans*, E) *Urocyon cinereoargenteus*, and F) *Conepatus leuconotus*.

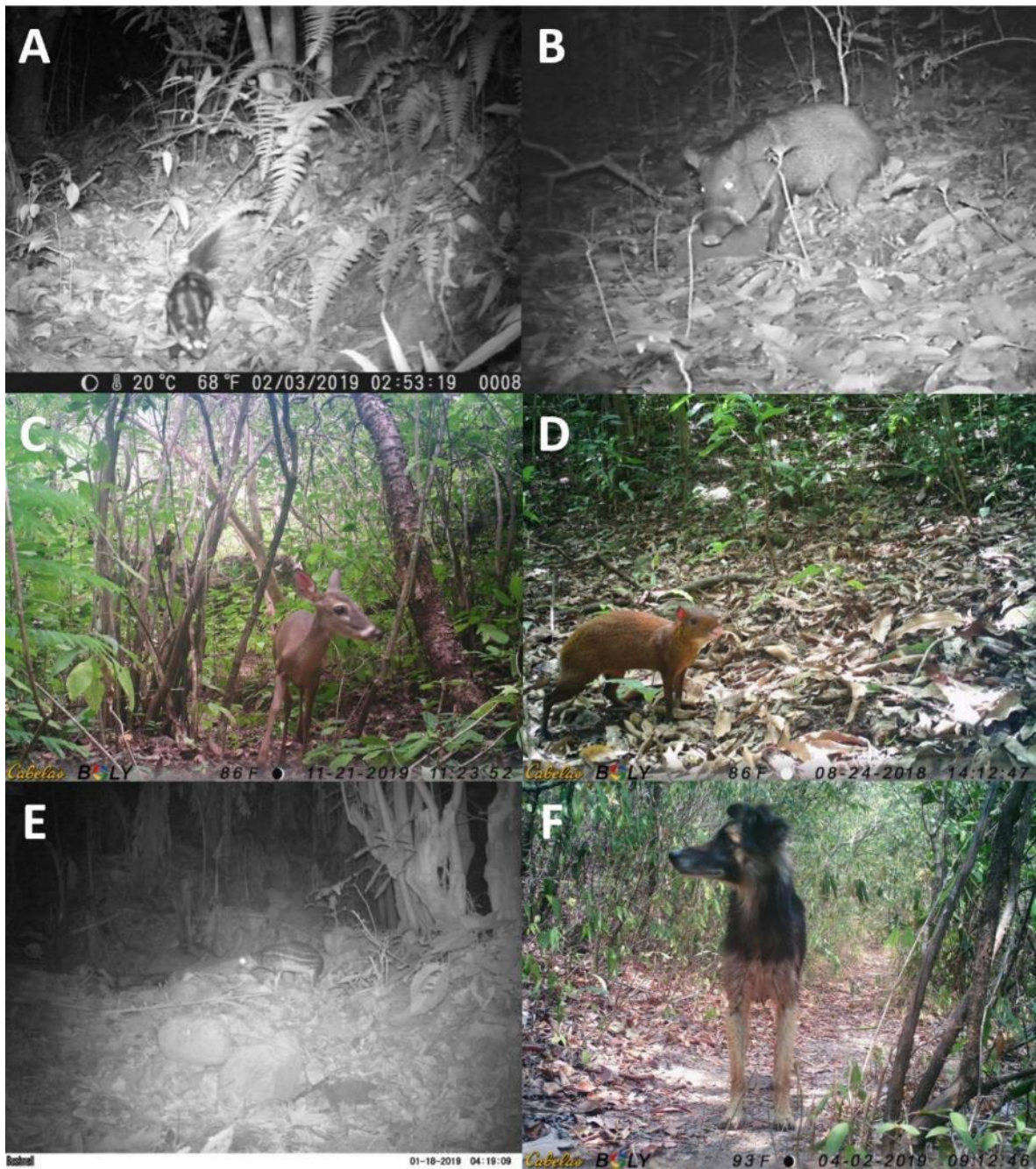


Fig. 4. Species identified in camera traps: A) *Spilogale angustifrons*, B) *Pecari tajacu*, C) *Odocoileus virginianus*, D) *Dasyprocta punctata*, E) *Cuniculus paca*, and F) *Canis lupus familiaris* (Domestic dog).